



The Managed Mentoring Program on getting started in beekeeping.

Managed Mentoring



Managed Mentoring

Photo Collage of Beekeeping Visuals

Lesson | Things you will see (Part 2)



What is Covered in this Module

Bee Behaviors: Bridge, Burr, Brace Comb

Poorly Formed Comb/Cross Comb

Incoming Pollen

Guard Bees

Bees Scenting

Bearding

Bullet Drone Comb

BIAS and The Rainbow Pattern

Things you will not see

Sting Reaction





Burr, Bridge, Brace Comb

■ Burr, Bridge, Brace Comb

- *Excess wax deposited throughout the hive*
- *Bees will sometimes place wax in errant places*
 - Especially when they have wax bees during nectar flow
 - Bridge comb to help move from one surface to another



■ Location

- *Found in places where bees space is violated or where bees feel the need to use comb for various purposes*
 - Gap areas bigger than 1/4"
 - On top bars, On hive box interiors, Between frames

■ Burr, Bridge, Brace Comb

- *Each colony behaves differently. Some build a lot, some do not build at all*
- *Mind the gaps around your frames to keep this in check*
- *Recommend maintenance – keep cleaned up*

Poor Comb

Cross Comb





Incoming Pollen

■ Incoming Pollen

- *Multi-color granules carried on the foragers legs*
- *The bees will carry it in and pack it into the cells*



■ Location

- *Front entrance*
- *You will also see bees with their pollen baskets full walking around on the comb*

■ Pollen Colors

- *The colors of the pollen are going to vary*
- *Yellow, red, orange, mustard green, sometimes blue, and other colors are possible*

Guard Bees

■ Guard Bees

- *Guards will be at the entrance*
 - Display an 'posture'
 - If alarmed, they will release a chemical that will alert other bees to defend the colony resources
- *Work the entrance and surrounding area*




■ Location

- *Found on the landing board and any openings (ie. upper entrance)*
- *Will also fly around the periphery of the hive*
- *They likely will fly the apiary and sometimes an even larger domain*

■ Typical Behavior

- *Will patrol the entrance and inspect arriving bees*
- *Will respond to a 'call to alarm' chemical release (pheromone)*
- *Will patrol the area surrounding the hive*



Nasanov
Gland

Bees Scenting

■ Scenting Bees

- *Bees with their heads down, abdomens up*
- *Actively fanning their wings*
- *Back abdomen tip tilted down with a light white slit (Nasanov gland) open to the air*



■ Location

- *Found on the landing board and any openings (i.e. upper entrance)*
- *May also be on the top of the hive if the hive is open*

■ Typical Behavior

- *They are distributing a scent that attracts nestmates to their location*
- *They do this when they want the bees to gather with them*



Scenting Bees

Bearding

■ Bearding

- *A compensation mechanism for the bees*
 - They use it for heat control
 - Less bees inside, less heat
- *They use it for congestion relief*
 - Less bee inside, more room to work



■ Location

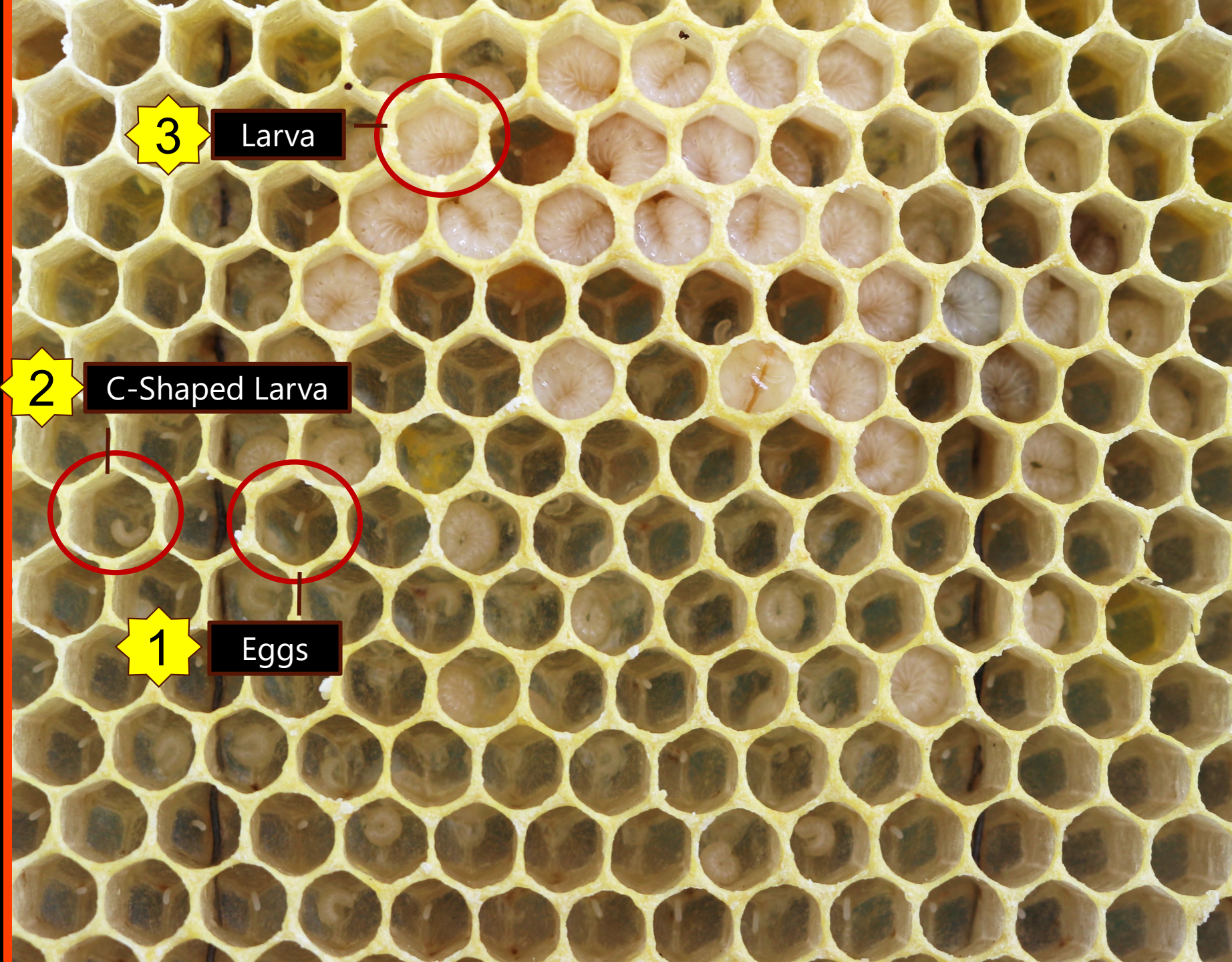
- *Found on the front of the hive*
- *Also found suspended in clumps of bees hanging under the colony*

■ Typical Behavior

- *This is seen in the summertime, especially when hot*
- *It is also common for the bees to do this when they are drying nectar*



Brood in All Stages (BIAS)



3

Larva

2

C-Shaped Larva

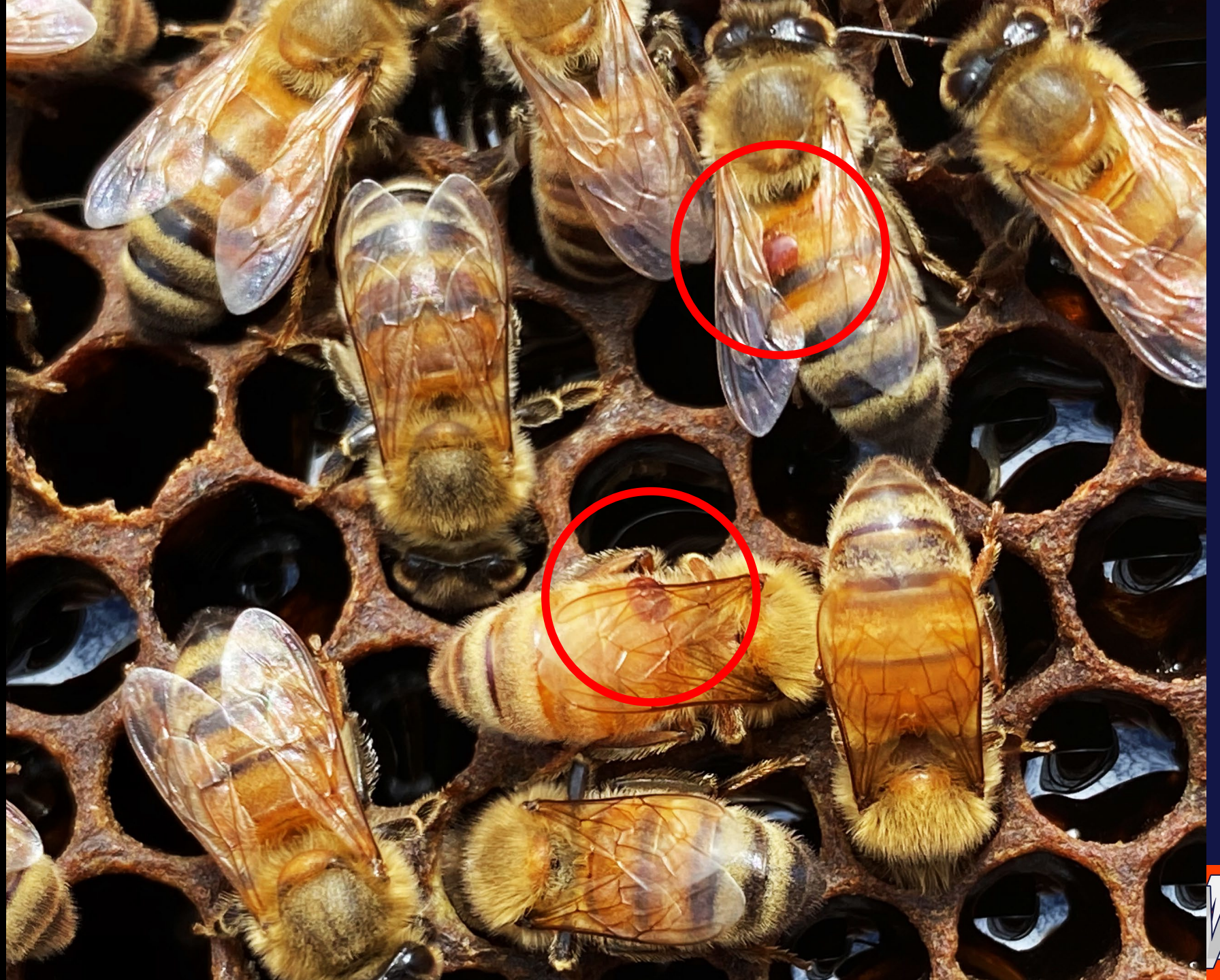
1

Eggs

Brood in All Stages (BIAS)



Things you
likely will
NOT see



Queen Failure

Look for 'bullet' drone brood

- *Mix of spotty capped worker cells and drone brood placed in worker cells, making a bullet tip*
- *High population of drones*





Note: Most of the Bees were shaken off of the frame

The Rainbow Effect



The **Rainbow** Effect

A great brood frame

Look for the rainbow

■ Good brood frame characteristics

- Honey in the corners, Halo of pollen, surrounding newly capped brood, Nurse bees abound, good patterns



Sting Reaction

□ Stings cause reactions

- *Should be local and topical*
 - Redness, swelling, itching > normal
- *Reactions that are a concern*
 - Reactions remote to the sting site
 - Stung on lower arm, different symptoms remote from the arm
 - Difficulty breathing, swallowing, hives etc.



Closing Comments

- **Customary Close**
 - Where we stand, where we are going...
 - *This lesson covered things you will likely see as your hive grows to full grown.*
 - *Our next topic keeps you moving forward to two full boxes:*
 - Feeding New Colonies
 - Record Keeping
 - Equipment Prep for Future
 - Graduating from one box to two



Q&A

- **What Questions did we not anticipate?**
 - If you have feedback, you can leave a constructive comment; but be nice.
 - You could also send an email to comments@managedmentoring.com
 - *Please refer to this video in the subject so we know what the reference is.*

